

Vendor Performance & Announcement Oct 2017

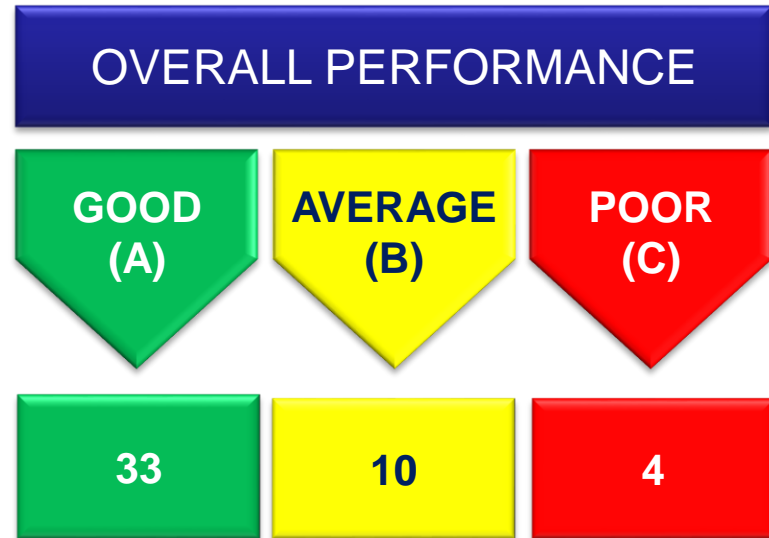
Mr. Sander Willems, Global Strategic Purchasing

Mrs. Sandra Voordeckers, Supplier Quality Assurance

Mr. Ted Witteveen, Logistics

Performance Oct 2017

Total component
Vendors (for production)
47

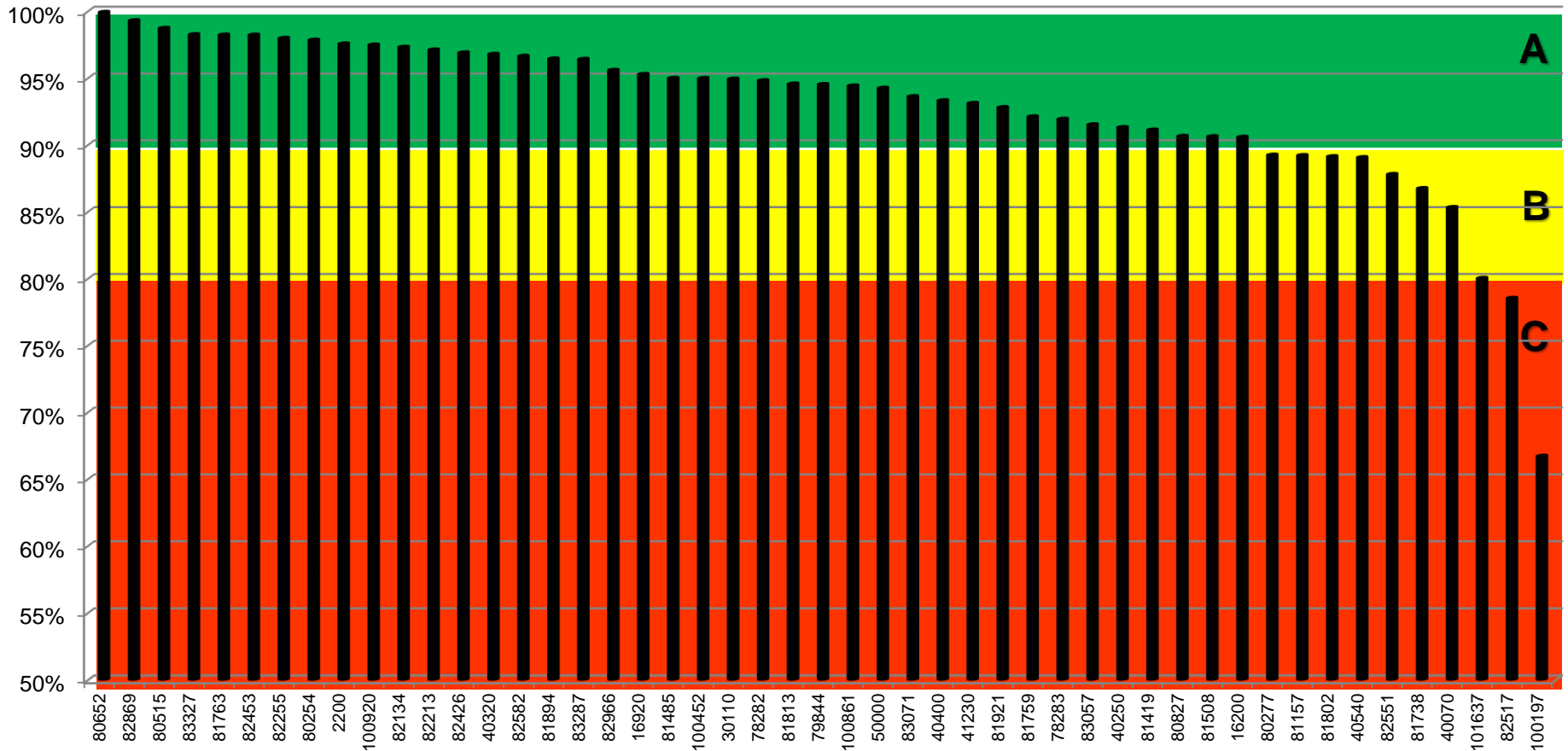


TOP 4 VENDORS	BOTTOM 4 VENDORS
83071	81157
83327	82517
82134	81508
81485	101637

Logistical Clip Measurement

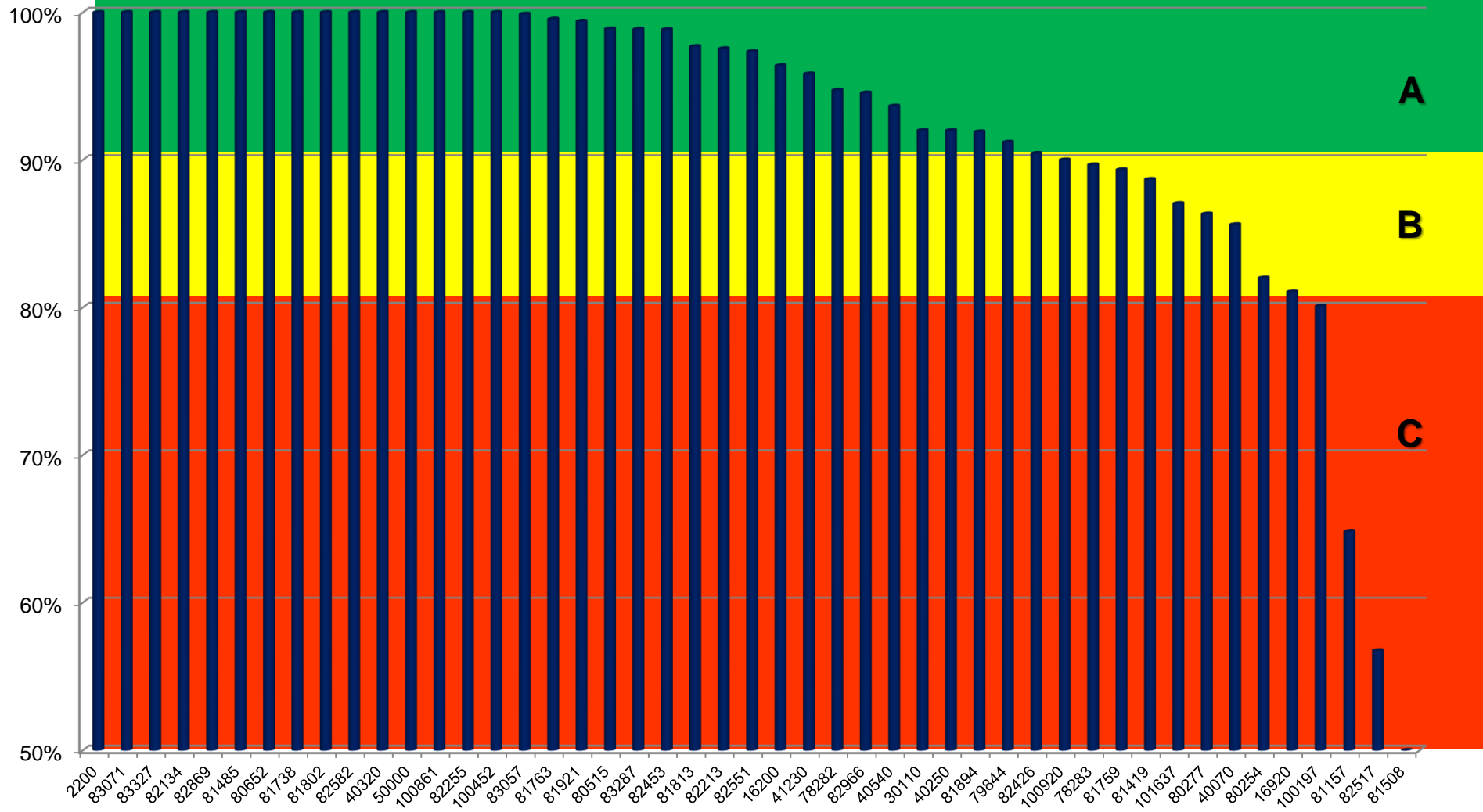
2017 cumulative total

%



Logistical Clip Measurement

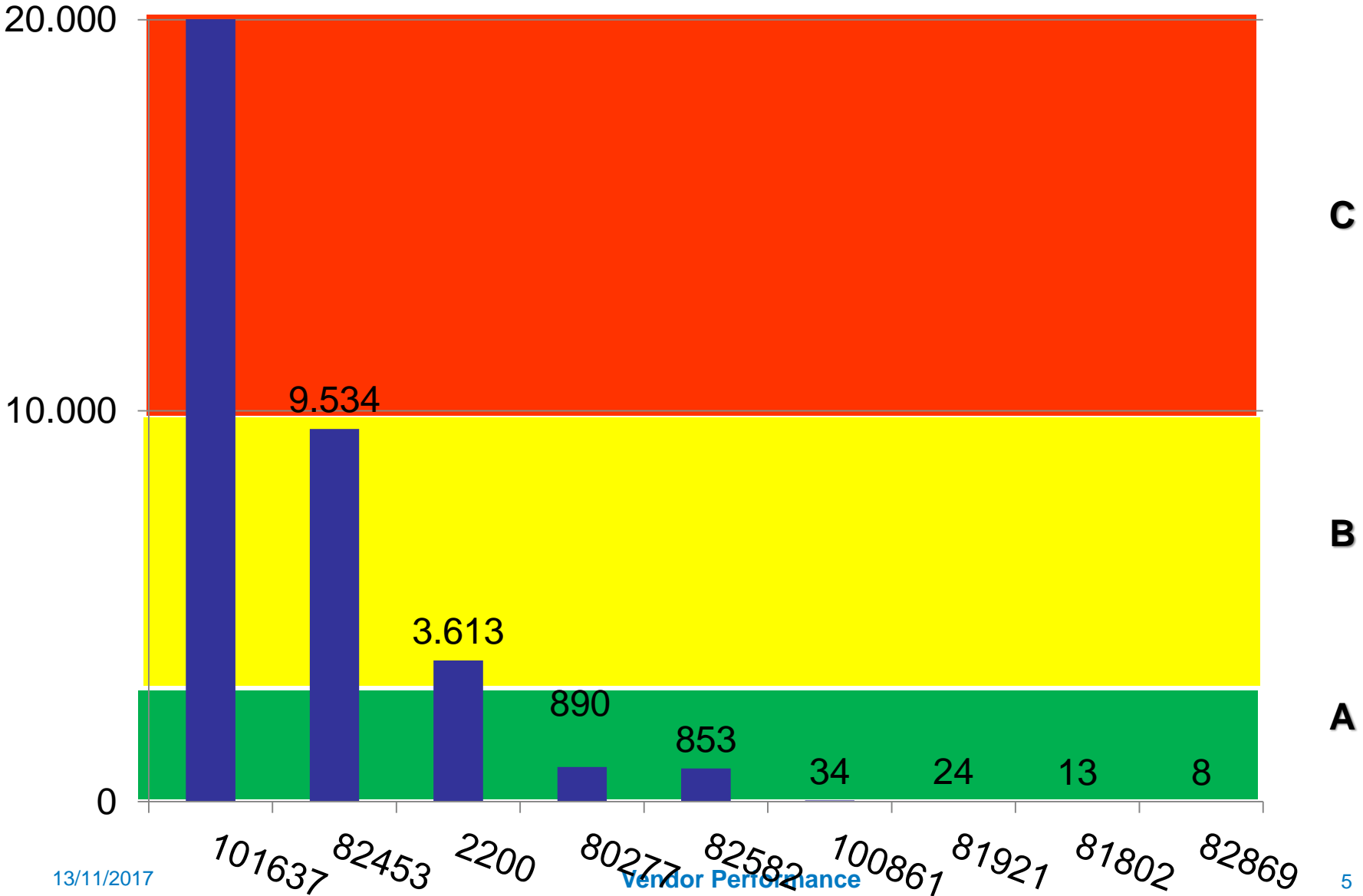
October 2017



Quality Measurement

Oct 2017

PPM 33.914



Announcement : Red Vendors

- 101637 (ongoing low CLIP & PPM)
- 100197 (ongoing low CLIP)
- 80277 (low Clip)
- Supplier Improvement Programs to be continued/started !

These Red Vendors will, together with Punch Powertrain Strategic Purchasing, investigate and present the **cause and counter measure report to Punch Powertrain Sint-Truiden**

Definition PPM

- PPM (Parts per million) is a measurement used by Punch Powertrain to measure quality performance.
- Definition: One PPM means one (defect) in a million or $1/1,000,000$
- The Punch Powertrain rate for most automotive supplies is targeted at 25 PPM or 0.0025%. To calculate: For example, let's say you had 25 pieces defective in a shipment of 1,000 pieces. $25/1000 = .025$ or 2.5% defective. $.025 \times 1,000,000 = 25,000$ PPM.

Definition CLIP

- CLIP (Confirmed Line Item Performance) is a measurement used by Punch Powertrain to measure delivery performance between the supplier and Punch Powertrain Sint-Truiden
- Definition: The KPI measurement considers all deliveries in a specific month versus delivery due date when:
- The delivery arrives within a 3 day window + and - of the requested date ; And if the received quantities are +/- 10% of the requested quantity. The CLIP target is currently defined > 90%.
- Starting 2018 The CLIP KPI will be sharpened in such a way that Punch Powertrain only accepts too early deliveries in a 3 day window, but not anymore too late deliveries (+3 days). Target next year will > 95%. More information will follow.

Punch Powertrain

