

DOCUMENTATION

Vendor Performance & Announcement June 2021

Mr. Erik Thues, Strategic Purchasing

Mr. Dirk Vanreusel, Supplier Quality Assurance

Mrs. Carine Verheijen, Operations - Supply Chain planning

CLIP/PPM Performance June 2021

Total component vendors
CLIP (for production)
27

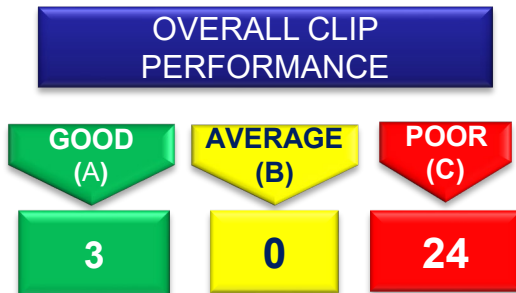
CLIP RANKING

- 0%-98% → C
- 98%-99% → B
- 99%-100% → A

TOP 4 CLIP VENDORS	BOTTOM 4 CLIP VENDORS
78282	81813
40320	40540
80652	101237
40250	100861

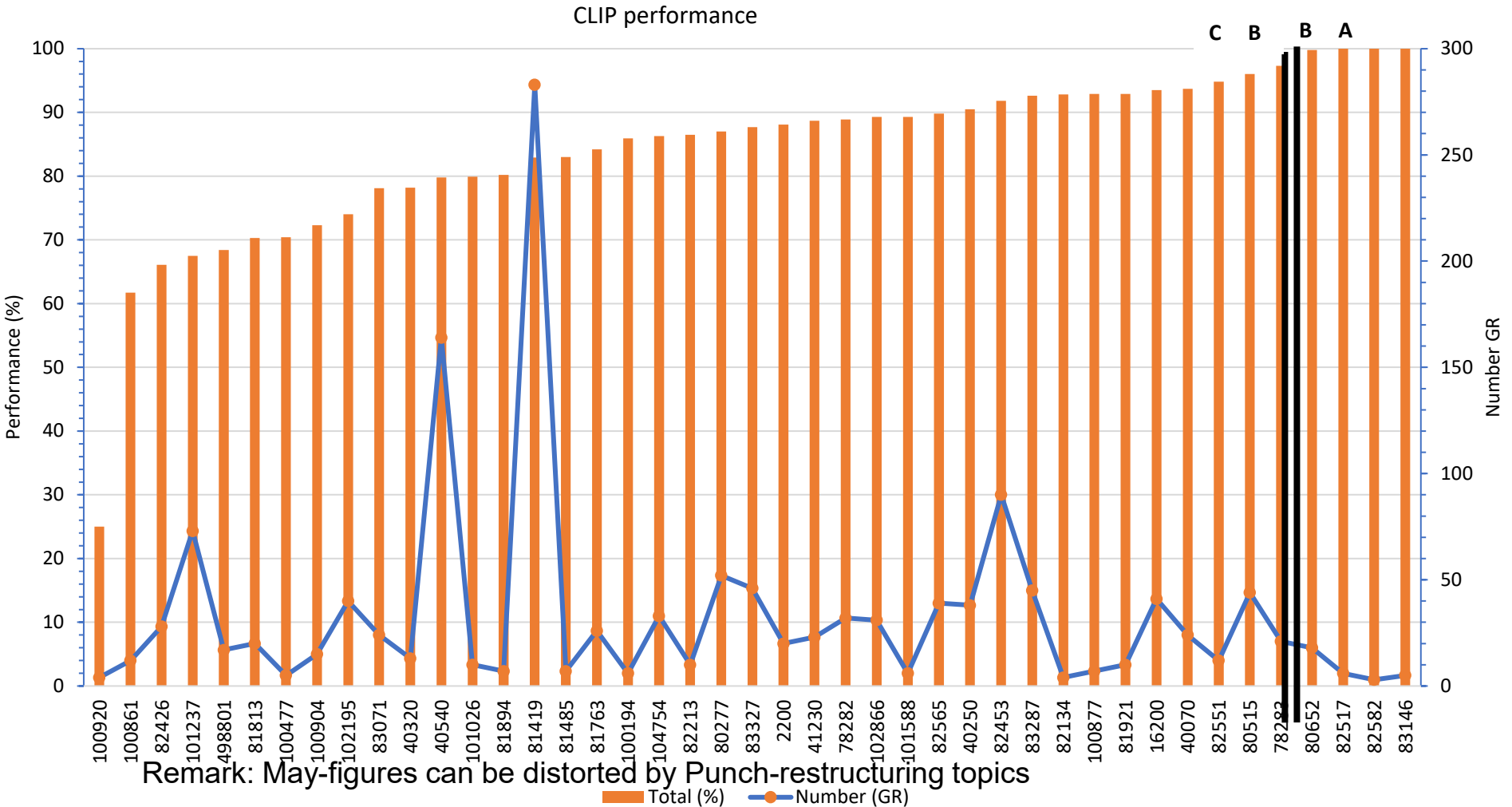
Quality ranking: Average last 3 months

Supplier	PPM	Percentage	PPM Class
101237	3.806	68%	C
82565	1730	31%	C
80277	30	1%	B
100861	20	0%	A
81419	16	0%	A



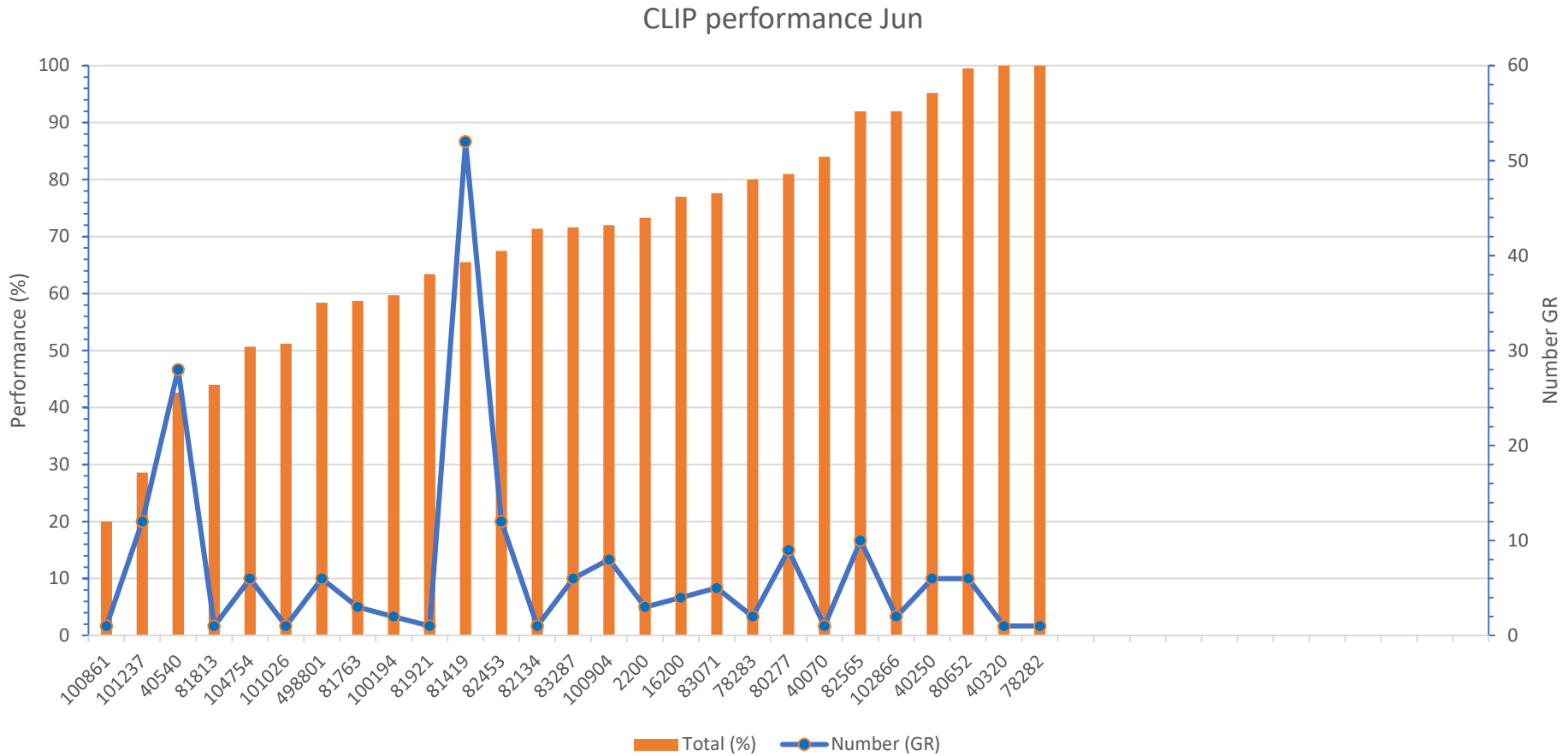
Logistical Clip Measurement

2021 cumulative total



Logistical Clip Measurement

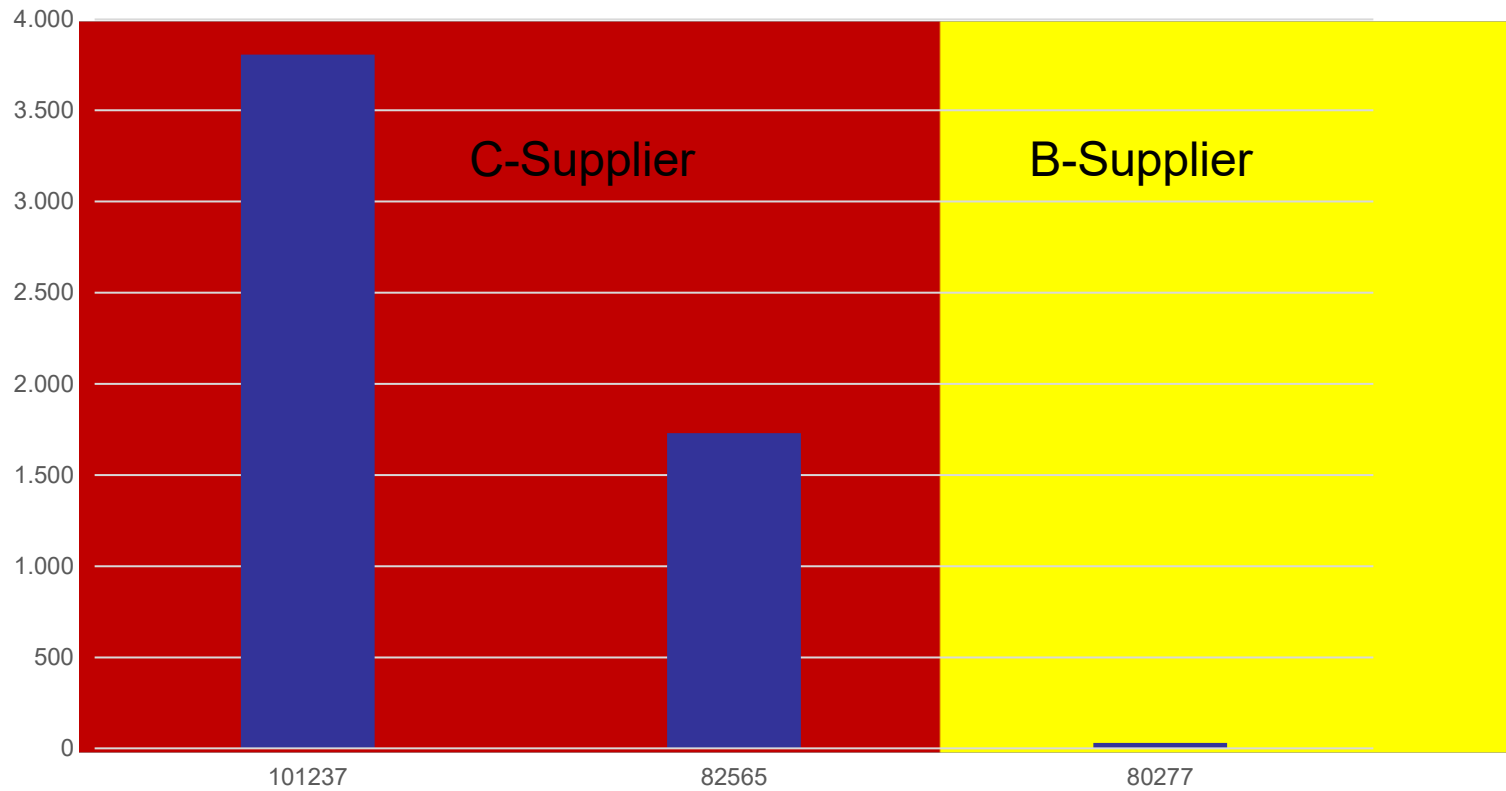
June 2021



Remark: May-figures can be distorted by Punch-restructuring topics

Supplier PPM last 3 months (Apr/May/Jun)

Supplier PPM-Performance



Announcement Red Vendors

Vendor 101237: CLIP, Rust & dimensional issues

Vendor 81419 : Clip delivery performance

For these Red Vendors the Punch Powertrain purchasing dept will start up a 'Supplier Improvement Programm'

Definition PPM

PPM (Parts per million) is a measurement used by Punch Powertrain to measure quality performance.

Definition: One PPM means one defect on a million pcs or $1/1.000.000$

The Punch Powertrain rate for most automotive suppliers is targeted at 25 PPM or 0,0025%.

To calculate: For example, let's say you had 25 pieces defective in a shipment of 1.000 pieces.
 $25/1000 = 0,025$ or 2,5% defective ; $0,025 \times 1.000.000 = 25.000$ PPM.

2021 PPM target ≤ 25 PPM (or contractually agreed otherwise).

Complaints are documented on delivery date of the parts.
PPM's are calculated as average of the last 3 months

Punch Powertrain

