

# DOCUMENTATION

## Vendor Performance & Announcement March 2021

Mr. Erik Thues, Strategic Purchasing

Mr. Dirk Vanreusel, Supplier Quality Assurance

Mr. Antoon Sonnemans, Supply Chain Management

# CLIP/PPM Performance

## March 2021

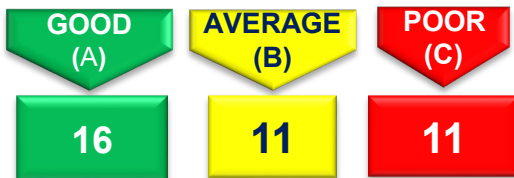
Total component vendors  
CLIP (for production)  
38

### CLIP RANKING

- 0%-98% → C
- 98%-99% → B
- 99%-100% → A

TOP 4 CLIP VENDORS	BOTTOM 4 CLIP VENDORS
104754	82426
102866	81813
100920	82565
100194	101237

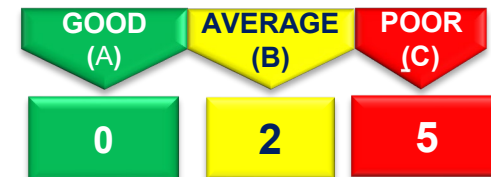
### OVERALL CLIP PERFORMANCE



**Quality ranking: Average last 3 months**

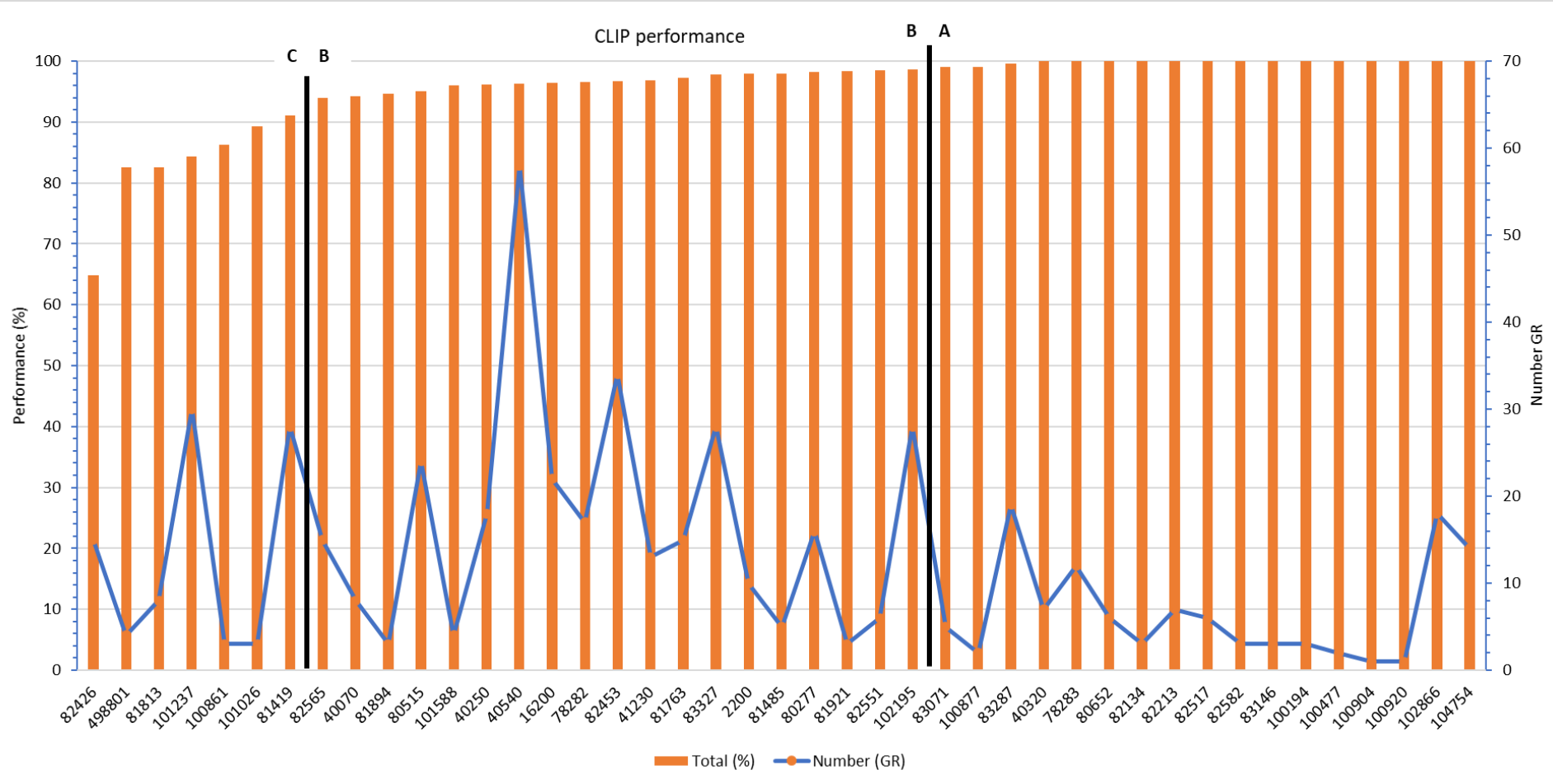
Supplier	PPM	Percentage	PPM Class
80277	5877	65%	C
82453	1585	17%	C
101237	1213	13%	C
498801	161	2%	C
81419	151	2%	C
83327	43	0%	B
2200	31	0%	B

### OVERALL QUALITY PERFORMANCE



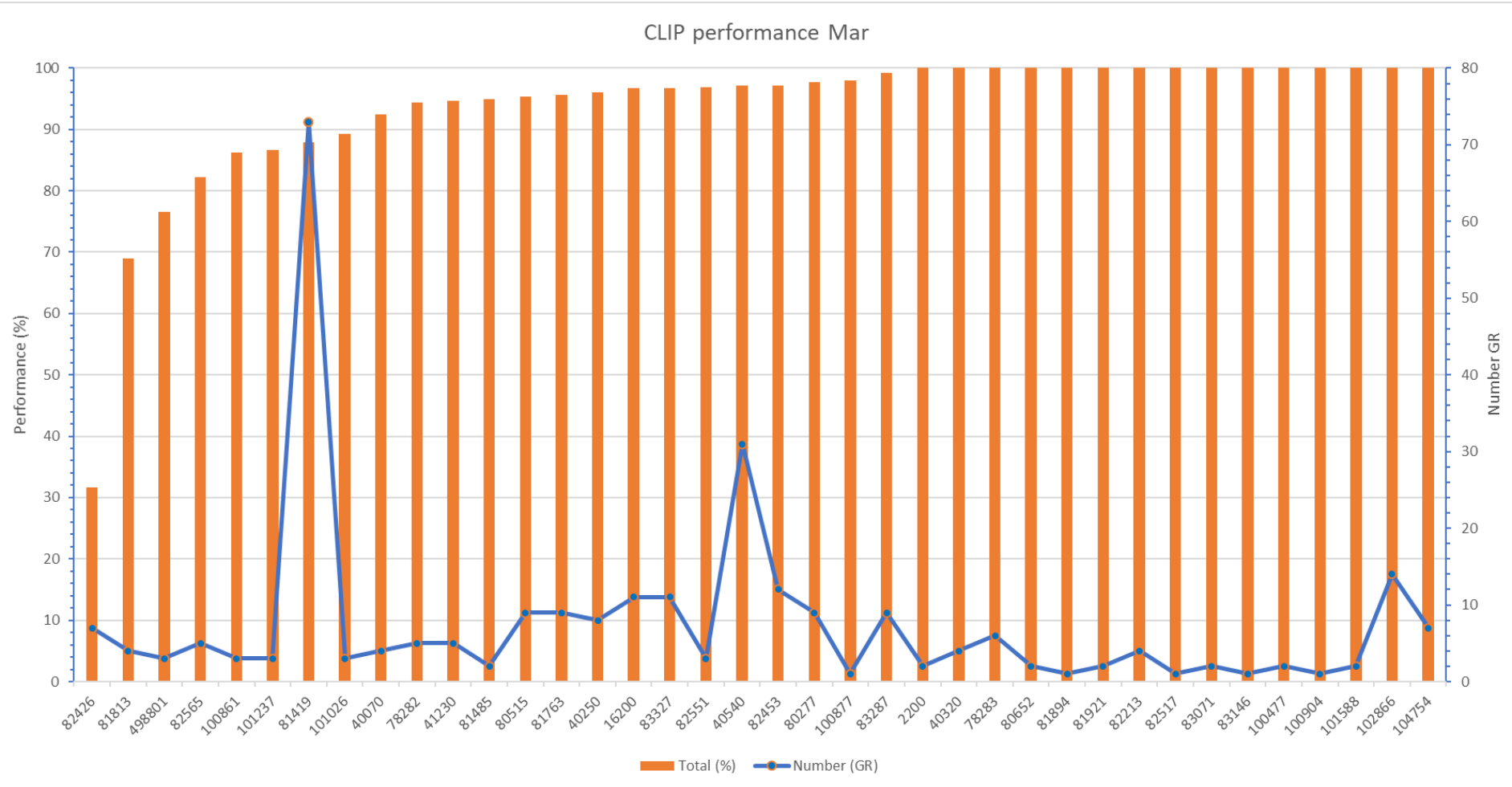
# Logistical Clip Measurement

## 2021 cumulative total



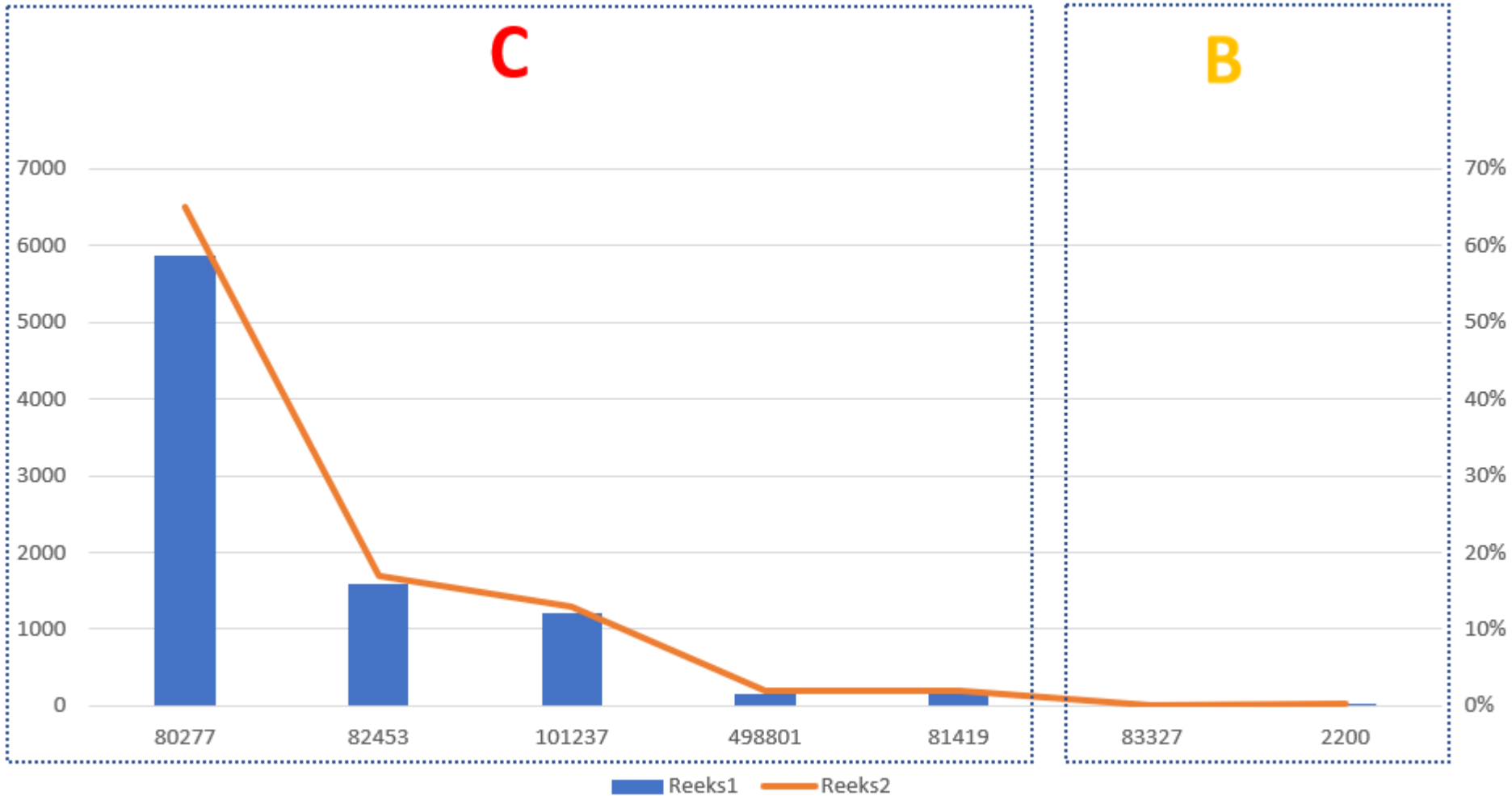
# Logistical Clip Measurement

## March 2021



# Supplier PPM Jan/Feb/March

SUPPLIER PPM Performance



# Announcement Red Vendors

**Vendor 82453:** High porosities.

**Vendor 101237:** Rust & dimensional issues.

**Vendor 81419:** Dimensional issues.

For these Red Vendors the Punch Powertrain purchasing dept will start up a 'Supplier Improvement Programm'

# Definition PPM

PPM (Parts per million) is a measurement used by Punch Powertrain to measure quality performance.

Definition: One PPM means one defect on a million pcs or  $1/1.000.000$

The Punch Powertrain rate for most automotive suppliers is targeted at 25 PPM or 0,0025%.

To calculate: For example, let's say you had 25 pieces defective in a shipment of 1.000 pieces.  
 $25/1000 = 0,025$  or 2,5% defective ;  $0,025 \times 1.000.000 = 25.000$  PPM.

2020 PPM target  $\leq 25$  PPM (or contractually agreed otherwise).

Complaints are documented on delivery date of the parts. In the past it was on the issue date (New since the beginning 2020, changed method of calculation).

PPM's are calculated as average of the last 3 months

# Punch Powertrain

