

DOCUMENTATION

Vendor Performance & Announcement July 2020

Mr. Eric Thues, Strategic Purchasing

Mr. Dirk Vanreusel, Supplier Quality Assurance

Mr. Ted Witteveen, Supply Chain Management

CLIP Performance July 2020

Total component vendors
CLIP (for production)
39

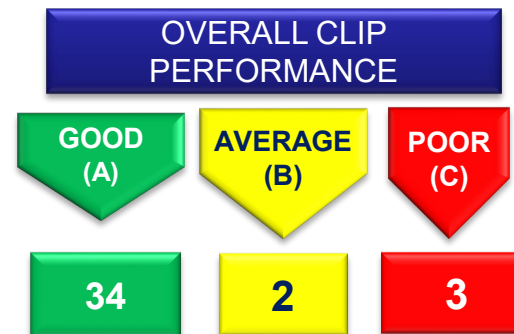
**Totaal aantal vendors bij Clip
van de betrokken maand**

CLIP RANKING

- 0%-98% → C
- 98%-99% → B
- 99%-100% → A

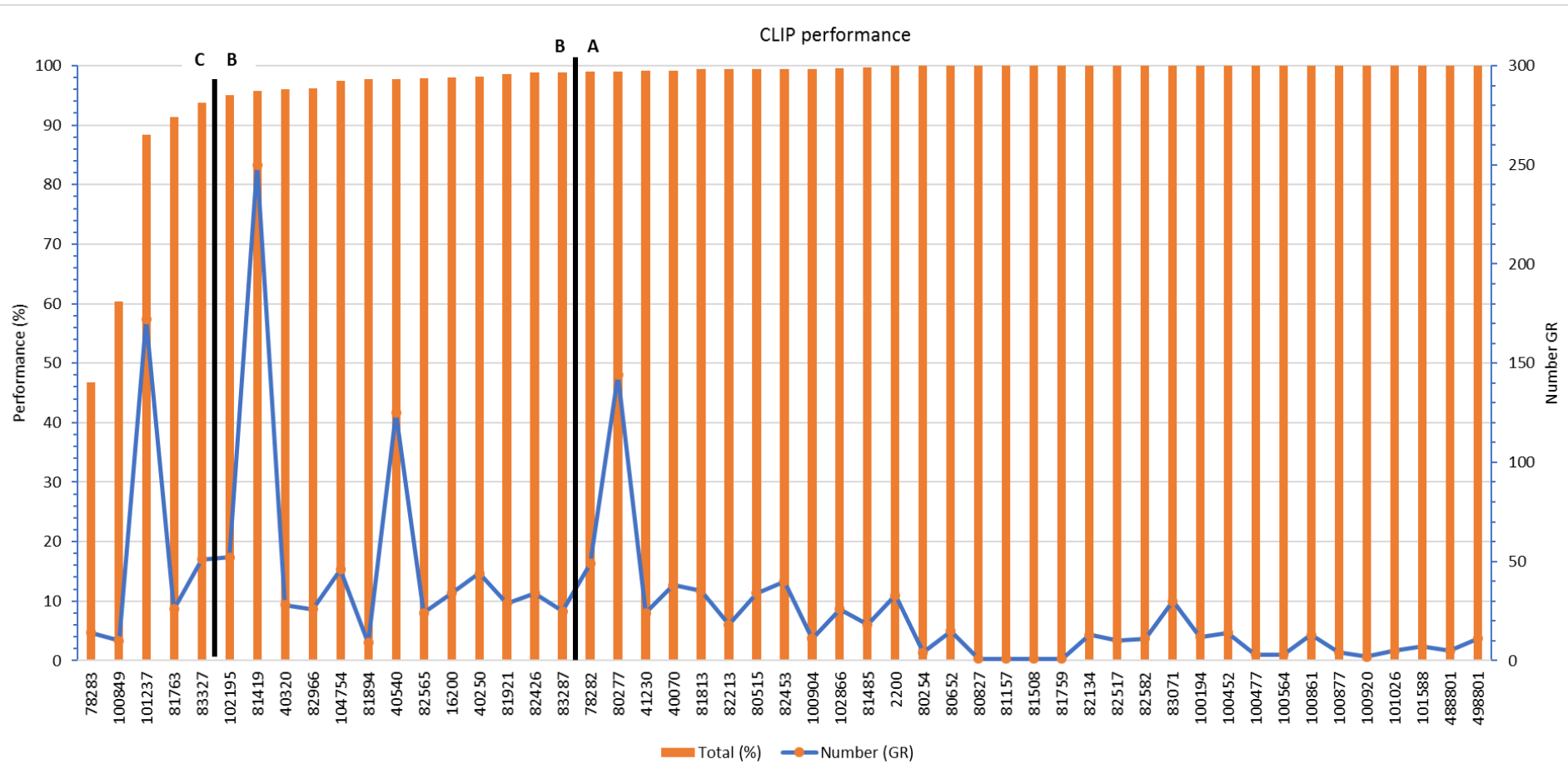
Supplier	PPM	Percentage	PPM Class
83327	23,613	97%	C
100861	643	3%	C
81419	132	1%	B
101237	75	0%	B
80277	27	0%	B

TOP 4 CLIP VENDORS	BOTTOM 4 CLIP VENDORS
104754	100849
102866	101237
101588	81419
100904	16200



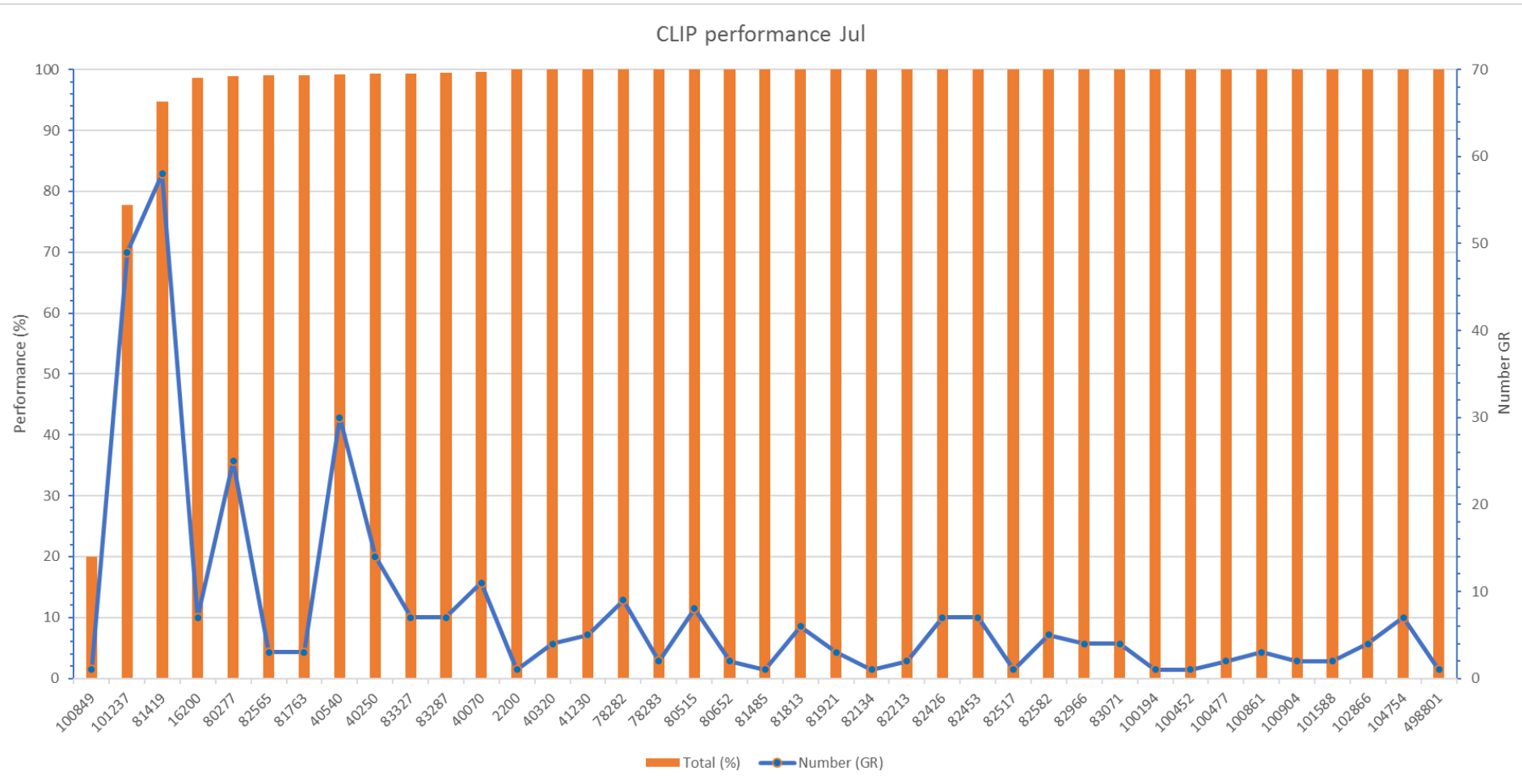
Logistical Clip Measurement

2020 cumulative total

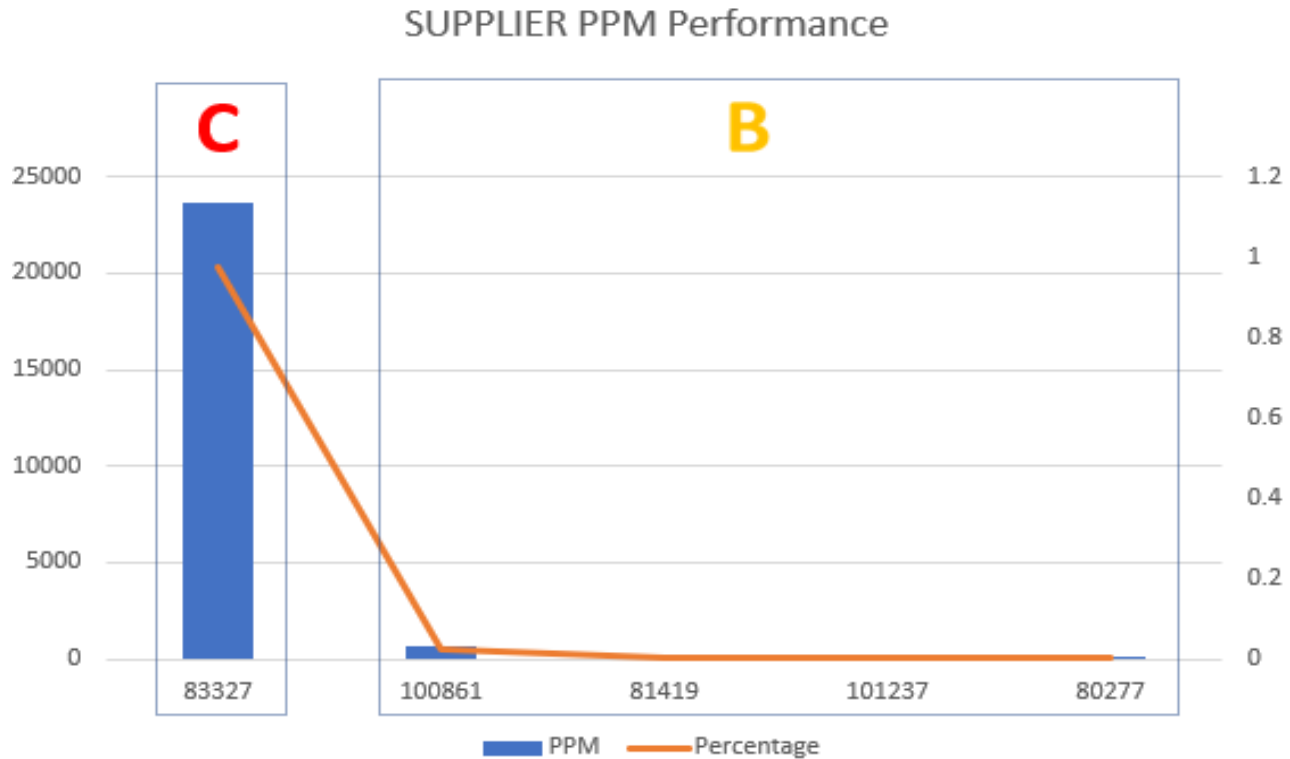


Logistical Clip Measurement

July 2020



Supplier PPM July 2020



Announcement Red Vendors

Vendor 83327: Supplier will investigate when the parts were produced and how long they were kept in stock.

Vendor 101237 : Supplier to follow up logistic 8D thourougly

Definition PPM

PPM (Parts per million) is a measurement used by Punch Powertrain to measure quality performance.

Definition: One PPM means one defect on a million pcs or 1/1.000.000

The Punch Powertrain rate for most automotive suppliers is targeted at 25 PPM or 0,0025%.

To calculate: For example, let's say you had 25 pieces defective in a shipment of 1.000 pieces.
 $25/1000 = 0,025$ or 2,5% defective ; $0,025 \times 1.000.000 = 25.000$ PPM.

2020 PPM target ≤ 25 PPM (or contractually agreed otherwise).

Complaints are documented on delivery date of the parts. In the past it was on the issue date (New since the beginning 2020, changed method of calculation).

Punch Powertrain

