


# Vendor Performance & Announcement

June 2019



Mr. Sander Willems, Strategic Purchasing  
Mrs. Sandra Voordeckers, Supplier Quality Assurance  
Mr. Ted Witteveen, Supply Chain Management

## Total component vendors

# 36

### Top 4 CLIP

Supplier	Jun	Number (GR)	Total (%)	Class
81894	100	2	100	A
82582	100	4	100	A
100877	100	2	100	A
101588	100	3	100	A

### Bottom 4 CLIP

Supplier	Jun	Number (GR)	Total (%)	Class
81921	0	3	0	C
83327	27	5	26,8	C
100920	46	2	45,8	C
498801	46	44	45,9	C

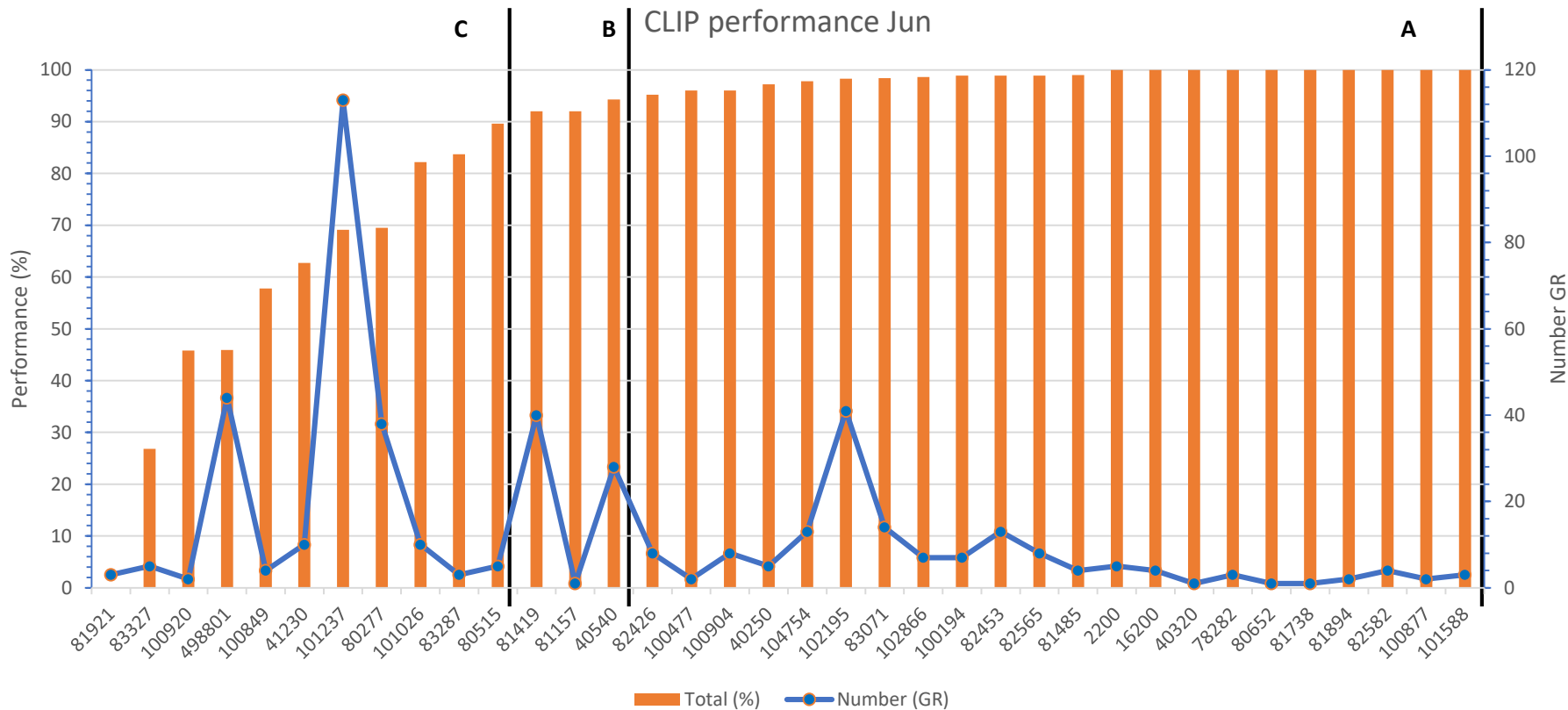
### PPM

Supplier	PPM	Percentage	PPM Class
83327	175251	71%	C
82453	28370	11%	C
101237	25788	10%	C
80277	14991	6%	C
82298	3032	1%	C
82426	284	0%	C
40540	54	0%	B
102866	9	0%	A

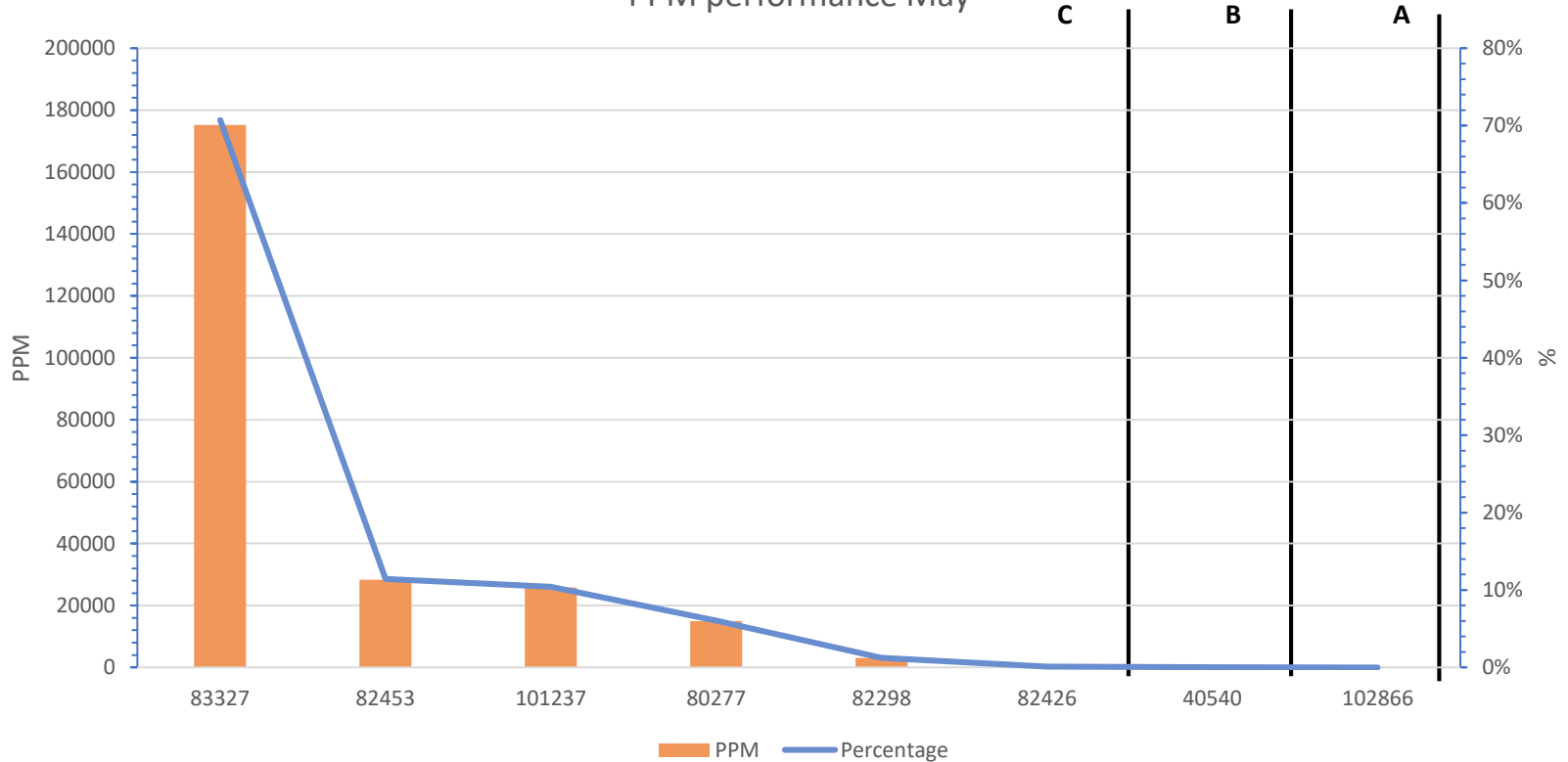
PPM 101237 not final due to sorting actions going on!

### Overall performance

Overall Performance		
Good	Average	Poor
20	3	13



PPM performance May



Following the June measurements, Punch Powertrain plans to start a quality improvement plan with vendor **83327** and continue also with vendor **101237**.

Separate official letter and invitation will follow.

CLIP (Confirmed Line Item Performance) is a measurement used by Punch Powertrain to measure delivery performance between the supplier and Punch Powertrain Sint-Truiden.

**Definition:** The KPI measurement considers all deliveries in a specific month versus delivery due date when:

The delivery arrives within a 3 day window + and - of the requested date ; And if the received quantities are +/- 10% of the requested quantity. The CLIP target is currently defined > 90%.

Starting 1 January 2018 The CLIP KPI will be sharpened in such a way that Punch Powertrain only accepts too early deliveries in a 3 day window, but not anymore too late deliveries (+3 days).

2019 CLIP target > 95%.

PPM (Parts per million) is a measurement used by Punch Powertrain to measure quality performance.

Definition: One PPM means one defect on a million pcs or  $1/1.000.000$

The Punch Powertrain rate for most automotive suppliers is targeted at 25 PPM or 0,0025%.

To calculate: For example, let's say you had 25 pieces defective in a shipment of 1.000 pieces.  
 $25/1000 = 0,025$  or 2,5% defective ;  $0,025 \times 1.000.000 = 25.000$  PPM.

2019 PPM target  $\leq 25$  PPM (or contractually agreed otherwise).

If you have any further questions, please contact:

For CLIP

[Kenneth.Vanaken@punchpowertrain.com](mailto:Kenneth.Vanaken@punchpowertrain.com)

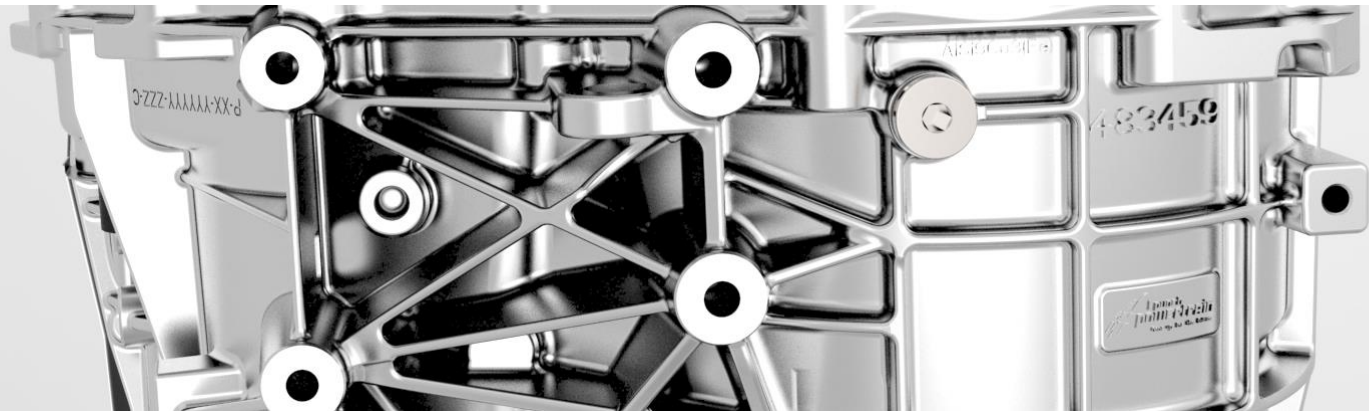
For PPM

[Lien.Geysenbergs@punchpowertrain.com](mailto:Lien.Geysenbergs@punchpowertrain.com)



# Thank you for your attention!

For more info about us, please visit our website [www.punchpowertrain.com](http://www.punchpowertrain.com)



**PUNCH POWERTRAIN NV**

Ondernemerslaan 5429 | BE-3800 Sint-Truiden | Belgium | +32 11 67 91 11 | [info@punchpowertrain.com](mailto:info@punchpowertrain.com) | [sales@punchpowertrain.com](mailto:sales@punchpowertrain.com)